

Economic Impact of Wind and Solar Energy in Illinois and the Potential Impacts of Path to 100 Legislation

COUNTY COMPARISONS AND COMMUNITY BENEFITS

5 counties have received over \$20 million in revenue to date

MCLEAN COUNTY HAS RECEIVED
\$53M TOTAL



LEE COUNTY HAS RECEIVED
\$30.9M TOTAL



LASALLE COUNTY HAS RECEIVED
\$30.4M TOTAL



HENRY COUNTY HAS RECEIVED
\$22.9M TOTAL



BUREAU COUNTY HAS RECEIVED
\$21.5M TOTAL

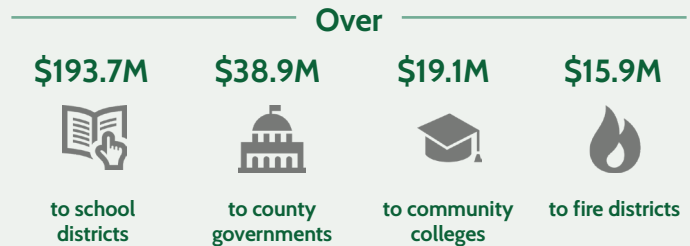


As of 2019

WIND AND SOLAR PROJECT PROPERTY TAXES

Over **\$306M** in total since 2003

Over **\$41.4M** in 2019 alone



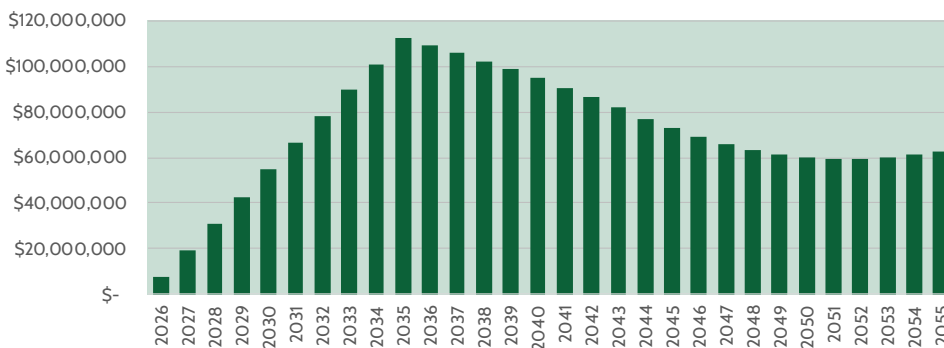
21 Illinois counties have received the property tax benefits of utility-scale wind and/or solar

Based on analysis of historical property tax records

PROJECTED UTILITY-SCALE WIND AND SOLAR PROPERTY TAXES

\$2.46B over the lifetime of the projects

PROPERTY TAXES FROM PROJECTED UTILITY-SCALE WIND AND SOLAR PROJECTS RESULTING FROM PATH TO 100 ACT



Economic Impact of Wind and Solar Energy in Illinois and the Potential Impacts of Path to 100 Legislation

**PATH TO 100 ACT
EXPANDED ILLINOIS RENEWABLE
PORTFOLIO STANDARD REQUIREMENT:**

40%
BY 2030

JOB CREATION



53,298 jobs created or supported during construction periods*



3,215 jobs created or supported annually during operations

ECONOMIC IMPACT

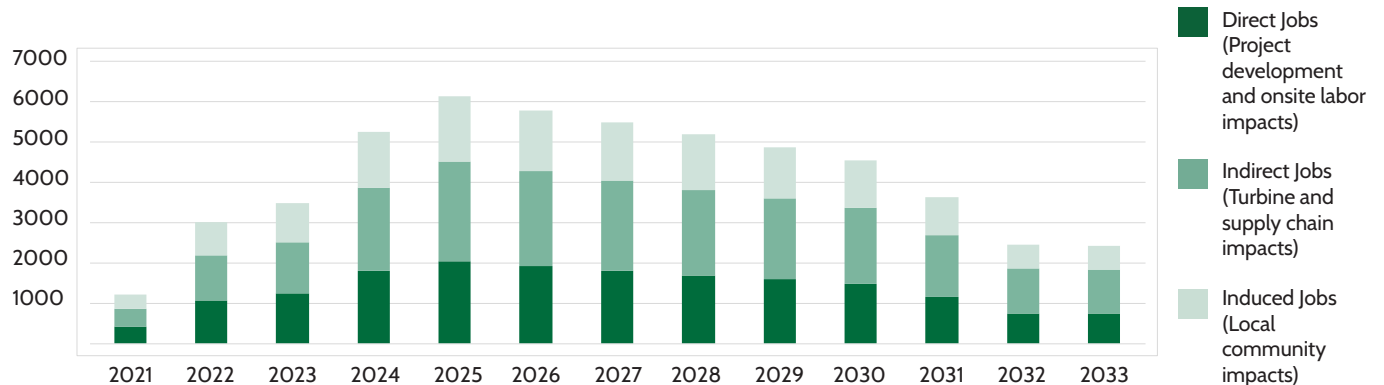
\$8.27B

in increased total economic impact during construction

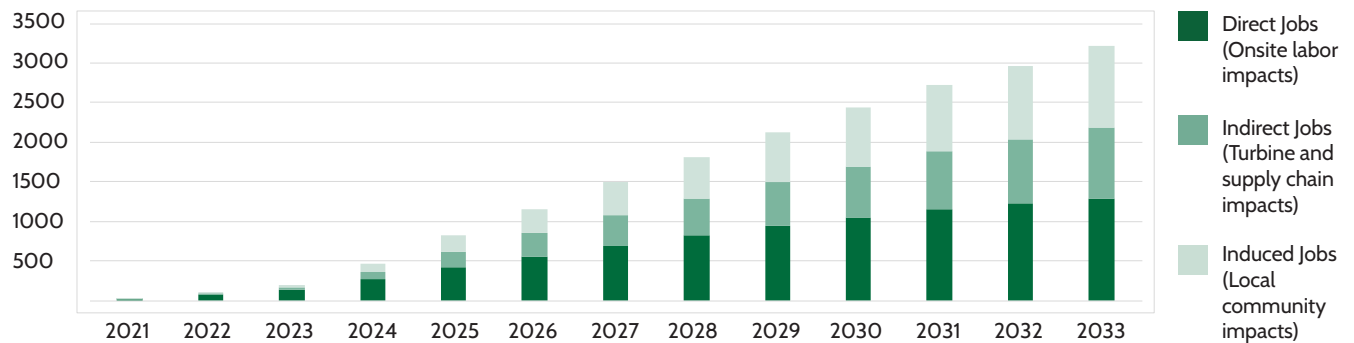
\$571M

per year in increased total economic impact during operations

JOB GROWTH DURING CONSTRUCTION PERIODS



JOB GROWTH DURING OPERATIONS



*All jobs in this report are full time equivalent (FTE) jobs for a year. In other words, 1 FTE = 2,080 hours worked in a year.